

A light blue world map is centered in the background of the page, showing the outlines of continents and major landmasses.

Perfect Crafts And Gifts Co.,Ltd

Catalogue

Perfect Crafts And Gifts Co.,Ltd

Office Add: Qingxi Road 88th, Shiqi District, Zhongshan City,
Guangdong Province, China.

Ph:15917449488

Email:info@perfectcraftsgifts.com

Web:www.perfectcraftsgifts.com

About Us

Perfect Crafts And Gifts Ltd is a professional designer and manufacturer for souvenir and promotional gifts with decades years of experiences, We are specialized in lapel pins, coins, medals, keychains, dog tag, cufflink, tie clip, belt buckle, lanyard, emblem, PVC luggage tag, magnet, coaster, silicone wristband and other promotional products. All products meet SGS, EN71 standard.

We strive for 100% customer satisfaction and provide you with the highest quality products at very competitive price.

With years of growth, we have gained a strong reputation for delivering high quality products in many countries. Our main markets are USA, European and the Middle East countries.

Philosophy: Excellence, Integrity, Innovation, Extraordinary Service

Principle: Quality is our Culture.

Service: Your Satisfy is our Obligation.

Goal: Your Best Solution to award, promotional gifts.

Table of Contents

Lapel Pin	01
Medal.....	03
Coin	05
Bottle Opener	07
Metal Keychain.....	09
Leather Keychain.....	11
Cufflink	13
Tie Clip	14
Ring	15
Belt Buckle	16
Trolley Coin	17
Golf Divot Tool	18
Lanyard	19
Emblem	21
Rubberized PVC Items	23-27
Silicone Wristband	28
Plating color	29
Background Texture for Die Casting process	30
Attachment	31
Packing	33



Material: Iron / Zinc alloy / Brass / Copper / Stainless steel

Process: Stamping / Die Casting/ Printing

Enamel: Hard Enamel / Soft Enamel/ Glitter Enamel

Color: Match Pantone Color

Plating: Gold/ Nickle/ Silver/ Copper/ Brass/ Rosegold/ Dye Black/
Black Nickle, for more plating color, please refer to P29

Epoxy: With / Without

Additional Process: Pad Printing/ Offset Printing / Sanding / Laser
engraved logo

Packing: Polybag / OPP bag / Backing card / Velvet bag / Box and
etc.



●●● Lapel Pin Additional Process:

Rhinestone



Flash Light



Glitter Enamel



Dangler



Pearl Enamel



Material: Iron / Zinc alloy / Brass / Copper

Process: Stamping / Die Casting

Enamel: Hard Enamel / Soft Enamel

Color: Match Pantone Color

Plating: Gold/ Nickle/ Silver/ Copper/ Brass/ Rosegold/ Dye Black/
Black Nickle, for more plating color, please refer to P29

Epoxy: With / Without

Additional Process: Pad Printing/ Offset Printing / Sanding / Laser
engraved logo

Packing: Polybag / OPP bag / Backing card / Velvet bag / Box and
etc.



Material: Iron / Zinc alloy/ Brass/ Copper

Process: Stamping / Die Casting

Enamel: Hard Enamel / Soft Enamel/ Glitter enamel

Color: Match Pantone Color

Plating: Gold/ Nickle/ Silver/ Copper/ Brass/ Rosegold/ Dye Black/
Black Nickle, for more plating color, please refer to P29

Epoxy: With / Without

Additional Process: Pad Printing/ Offset Printing / Sanding / Laser
engraved logo

Packing: Polybag / OPP bag / Backing card / Velvet bag / Box and
etc.



●●● Coin edge options:

Flat wave cut edge



Flat cut edge



Oblique Line edge



Rope cut edge



Material: Iron / Zinc alloy / Stainless steel / Aluminum

Process: Stamping / Die Casting

Enamel: Hard Enamel / Soft Enamel / Glitter Enamel

Color: Match Pantone Color

Plating: Gold/ Nickle/ Silver/ Copper/ Brass/ Rosegold/ Dye Black/ Black Nickle, for more plating color, please refer to P29

Epoxy: With / Without

Additional Process: Pad Printing/ Offset Printing / Sanding / Laser engraved logo

Packing: Polybag / OPP bag / Backing card / Velvet bag / Box and etc.



●●● Metal Keychain



●●● Leather Keychain



●●● Cufflink



●●● Tie Clip



●●● Ring



A measurement, generally between 4 and 13, determined by two factors: The diameter of the finger on which the ring will be worn and the knuckle, which the ring must slip over comfortably.

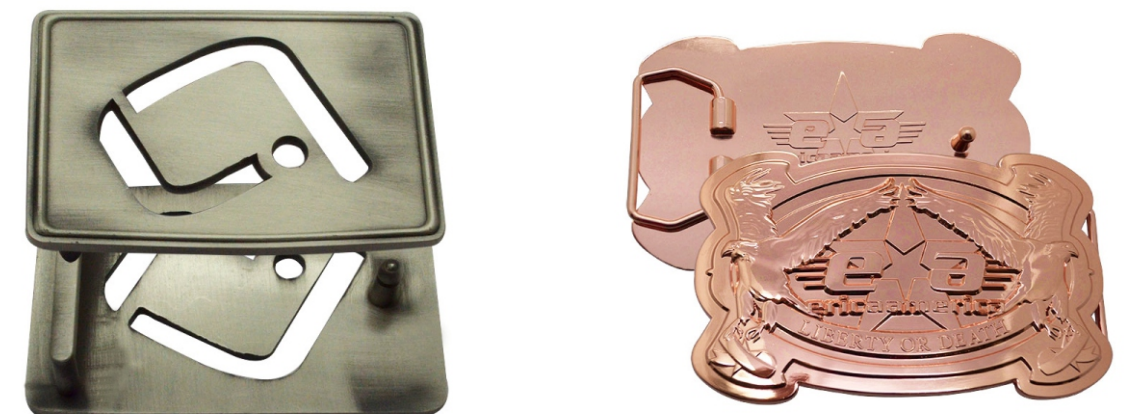
Steps:

1. Use a piece of string or dental floss and wrap it around the base of your finger.
2. Use a pen to mark the point on the string where the end meets.
3. Use a millimeter ruler to measure the string.
4. Choose the closest measurement to the chart above to find your ring size.

US Ring size conversion chart to inside diameter in mm

Size 4	Size 5	Size 6	Size 7	Size 8	Size 9	Size 10
14.9mm D	15.7mm D	16.5mm D	17.3mm D	18.1mm D	18.9mm D	19.8mm D
Size 11	Size 12	Size 13	Size 14	Size 15	Size 16	
20.6mm D	21.4mm D	22.2mm D	23.0mm D	23.8mm	24.6mm	

●●● Belt Buckle



●●● Trolley Coin



●●● Golf Divot Tool



●●● Lanyard



●●● Emblem



●●● Keychain



●●● Coaster



●●● PVC Emblem



●●● Book Marker



●●● Bottle Opener



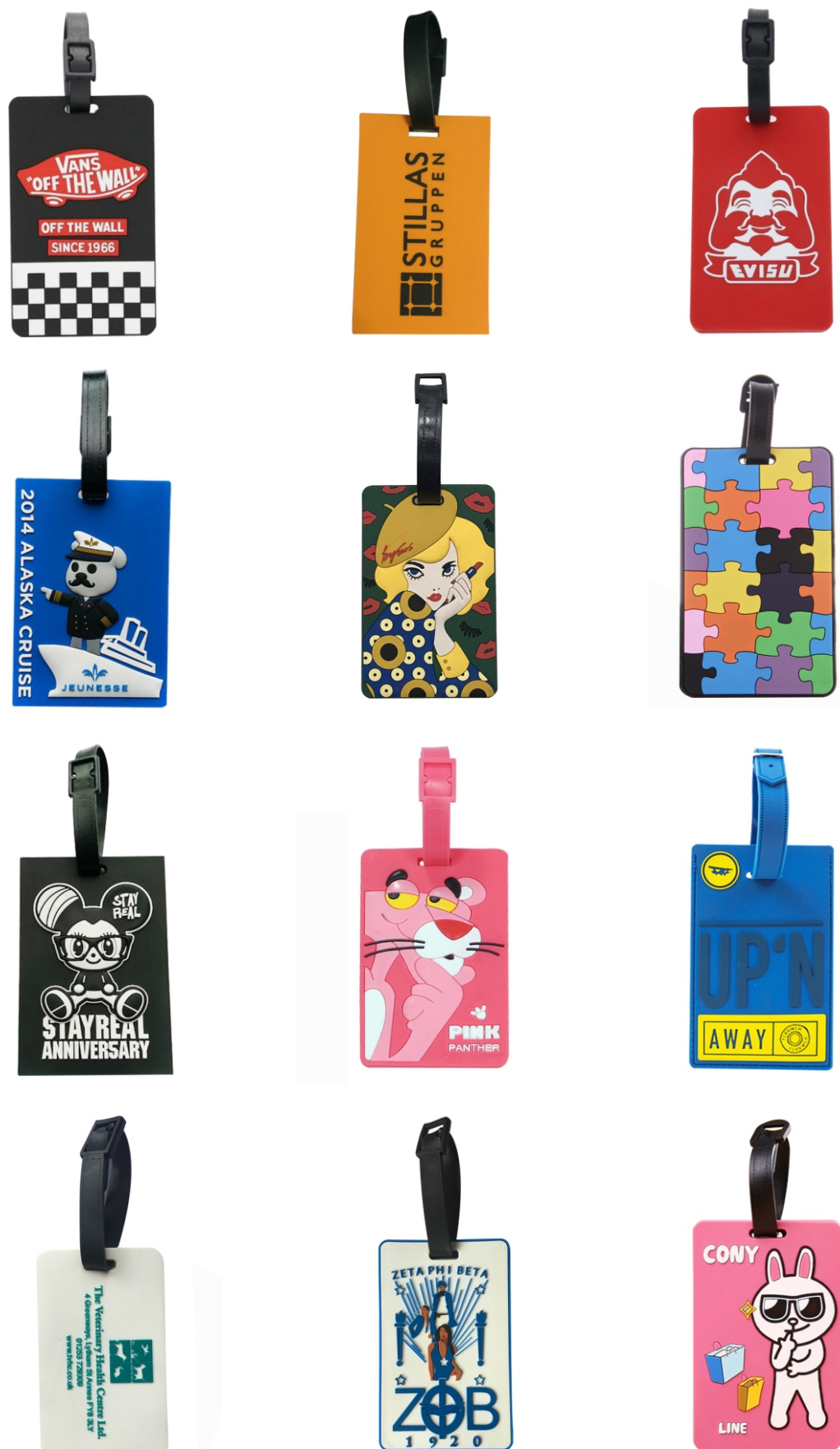
●●● Photo Frame



●●● Fridge Magnet



●●● Luggage Tag



●●● Silicone Wristband



●●● Plating Color



●●● Background Texture for Die Casting

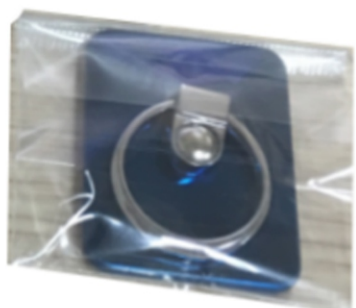


●●● Attachment



●●● Packing

Polybag



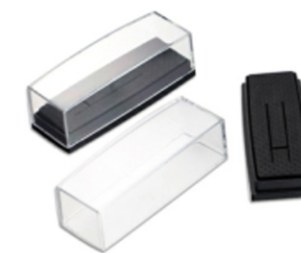
Backing card+OPPbag



Barcode Stickers



Plastic Box
80*45*17MM



Plastic Box
80*30*26MM



Plastic Box
100*75*21MM

Velvet Bags



65*85mm
82*102mm
80*65mm
104*116mm
108*148mm

Coin Box



33mm Dia
35mm Dia
38mm Dia
42mm Dia
45mm Dia

Velvet Box



Hard Paper Box



Leather Box



Plastic Pin box
28*28*20MM



Plastic Pin box
30*30*22MM



Plastic Pin box
40*40*20MM

Customers' Design are welcome!



Velvet bags and plastic boxes are available in different sizes, the box inserts also can be changed. For more information, please contact us.